

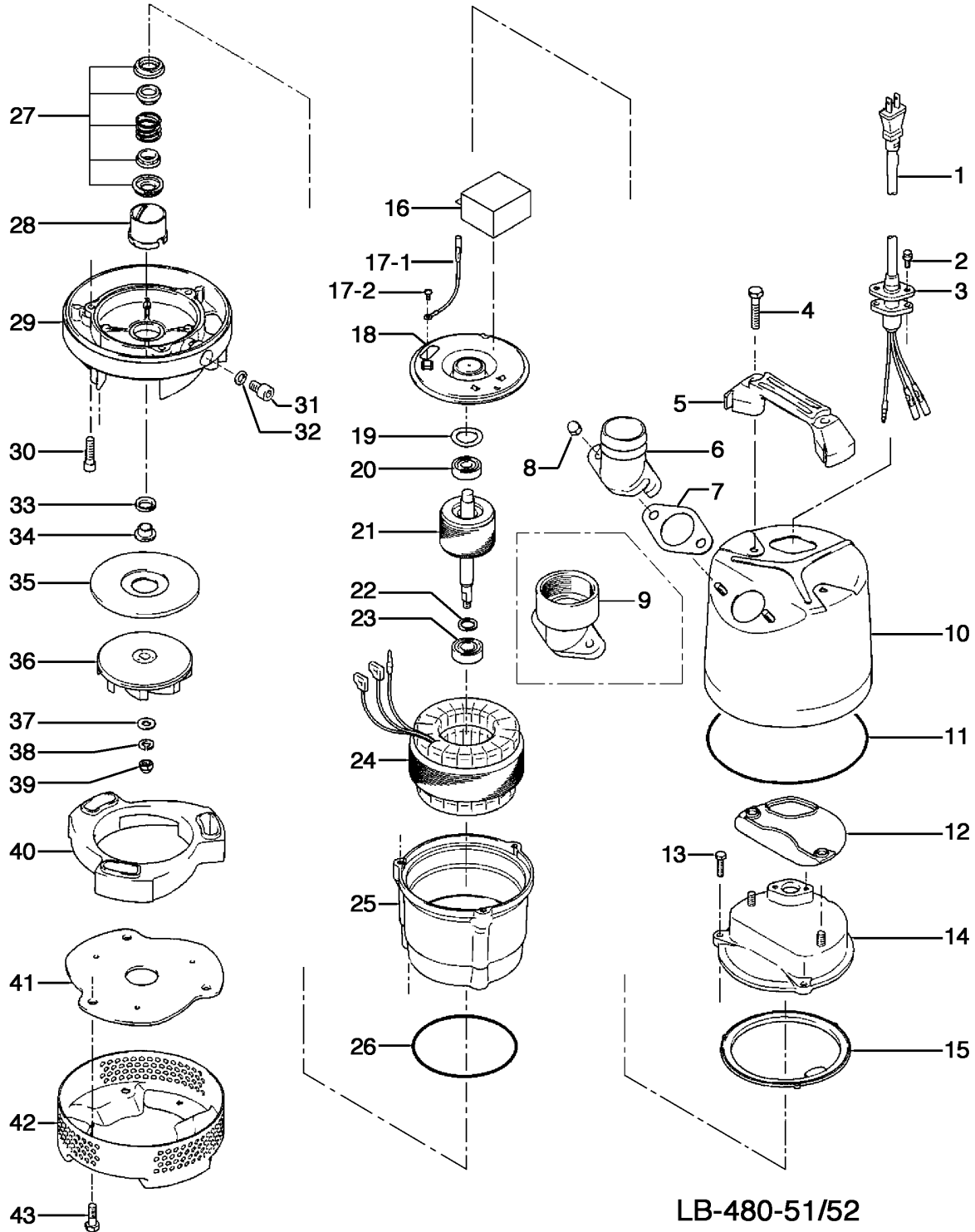
**LB-480-51/52**

Kontroll-Nr. --

2017-01-31 V.18 / 1.10.2015

LB-480-51/52			
Item	Item no.	Description	Quant.
1	001-007-43	Cable Set (10m) 230V-50HZ(EUR) H07RN3Cx1mm2(CEE-W/PLUG) LB(HAR)	1
2	140-427-17	Hex.Bolt (w/Plain Washer) M5x15 SUS304 (EN X5CrNi18-10)	2
3	003-190-10	Gland SUS316 (EN X5Cr-Ni-Mb17-12-2)	1
4	140-000-13	Hex.Bolt (w/Plain Washer) M8x65 SUS304 (EN X5CrNi18-10) Stainless Steel	2
5	068-289-18	Handle LBA3-250/480 (SPC+NBR)	1
6	032-000-12	Hose Coupling 50mm(LB-480-52/62 Type) ADC	1
6	032-000-23	Hose Coupling (for EUR) BSPT-2, LB-480 ADC	1
7	121-587-17	Packing LB-250/480-51/61 NBR	1
8	141-144-10	Flanged Hex. Nut M8 SUS304 (EN X5CrNi18-10) Stainless Steel	2
9	032-000-23	Hose Coupling (for EUR) BSPT-2, LB-480 ADC	1
9	032-000-70	Screwed Flange 40mm inside thread 40mm(LB-480-51/61)	1
10	065-382-13	Outer Cover LB-250/480-51/61 Type SPC	1
11	122-453-16	O-Ring 172xd2.7 NBR	1
12	121-434-18	Packing LB3-250/480 Synthetic Rubber	1
13	140-396-16	Hex.Bolt (w/Plain Washer) M6x20 SUS304 (EN X5CrNi18-10) Stainless Steel	3
14	051-282-19	Head Cover ADC	1
15	121-546-14	Packing d120xd142x6.2t NBR	1
16	076-161-18	Capacitor 220/230/240V-50HZ SH-CAP,580VAC-8MF(3Terminal)	1
17-1	009-000-01	Earth Terminal 2mm2x195L	1
17-2	143-203-14	Pan Screw M4x5	1
18	050-486-12	Motor Bracket SECD	1
19	142-451-16	Wave Washer 6201(D=32,t=0.25) SUP	2
20	052-100-15	Bearing 6201ZZC3	1
21	055-889-14	Rotor (HS2.4S-51/52, LSC1.4S-51, LB-480-52)	1
22	061-180-17	Bearing Collar d15.1xd20x1.6t SS	1
23	052-101-16	Bearing 6202ZZC3	1
24	056-C70-19	Stator 220/230/240V-50HZ	1
25	064-508-14	Motor Frame ADC	1
26	122-133-17	O-Ring G-110 NBR	1
27	025-000-45	Mechanical Seal W-14VCA SiC	1
28	030-000-09	Oil Lifter W-14VL Resin	1
29	029-000-70	Oil Casing LB-250/480-51/61 Type ADC	1
30	140-252-19	Hex.Socket Cap Bolt M6x20 SUS304 (EN X5CrNi18-10)	3
31	035-124-12	Oil Plug M10x15 SUS304 (EN X5CrNi18-10)	1
32	121-246-11	Packing (Oil Plug) d10.3xd16x2t PE	1
33	122-441-11	V-Ring VR-14 NBR	1
34	071-292-14	Shaft Sleeve LB3-250/480 SUS304 (EN X5CrNi18-10) Stainless Steel	1
35	031-000-01	Wear Ring LB-250/480-51/61 Type SPC+Rubber	1
36	021-007-43	Impeller 50Hz	1
36	021-007-44	Impeller (60Hz) 60Hz Urethane Rubber	1
37	142-127-10	Plain Washer M8 SUS304 (EN X5CrNi18-10) Stainless Steel	1
38	142-163-21	Spring Washer M8 SUS316 (DIN 1.4401) Stainless Steel	1
39	141-030-12	Hex.Cap Nut M8 SUS304 (EN X5CrNi18-10) Stainless Steel	1
40	020-B89-19	Pump Casing LB-250/480-51/61 Type Synthetic Rubber	1
41	022-001-28	Suction Cover LB-250/480-52/62 Type SPC+Rubber	1
42	023-547-18	Strainer Stand LB-250/480-51/61 SPC	1
43	140-503-18	Hex.Bolt (w/Plain Washer) M8x16 SUS304 (X5CrNi18-10) Stainless Steel	3
	173-567-12	Packing & O-Ring Set	1
	##oilVG32	ml Turbine Oil ISO VG32	150

# Exploded View LB-480-51/52



LB-480-51/52