

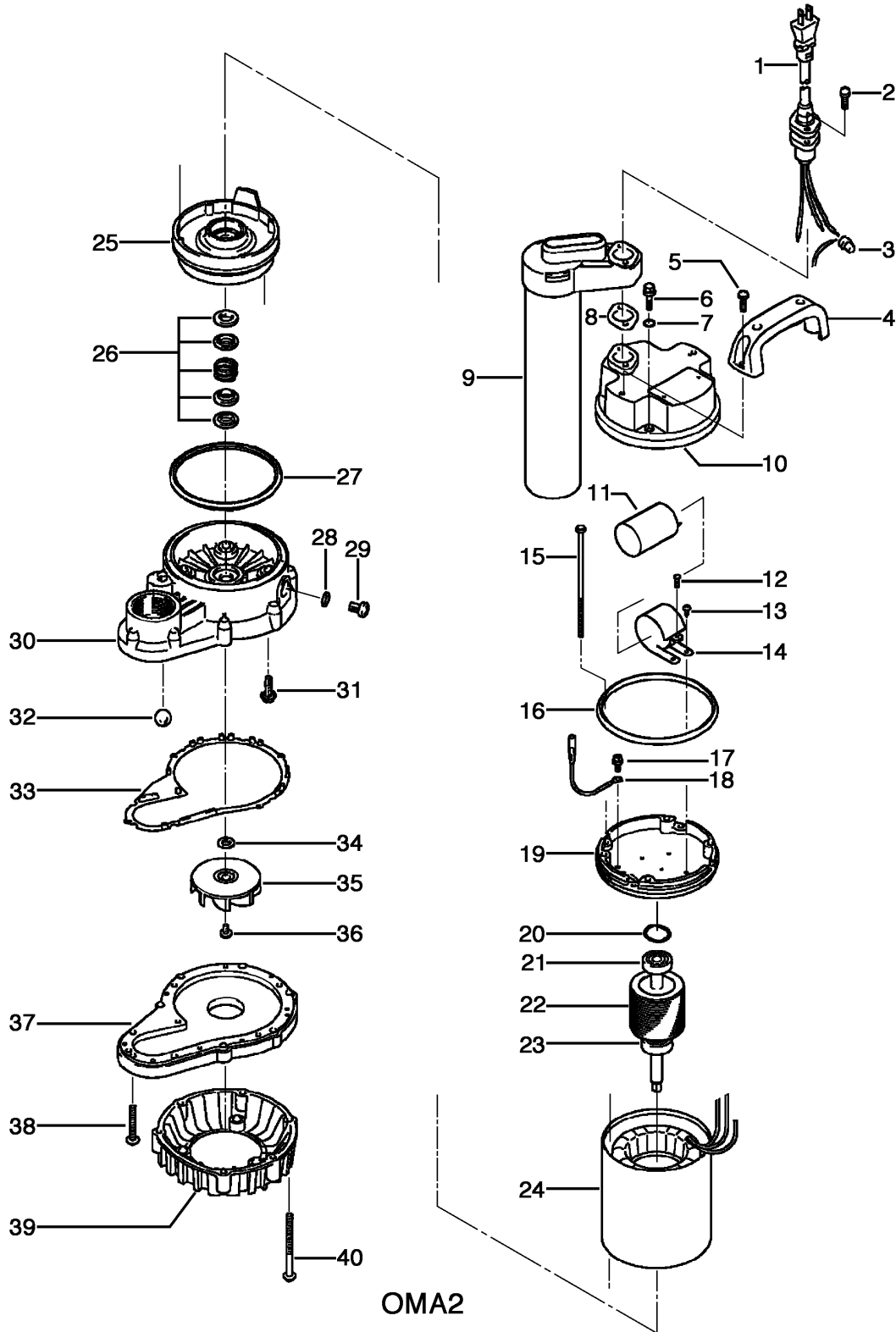
OMA2

Kontroll-Nr. --

2020-02-03 V.18 / 1.10.2015

OMA2			
Item	Item no.	Description	Quant.
1	001-003-91	Cabtyre Cable Set (10m) 110V-50HZ(EUR) H07RN3Cx1mm2 TF-11	1
1	001-350-14	Cabtyre Cable Set (10m) 220/230/240V-50HZ(EUR) H07RN3Cx1mm2(CEE-W/PLUG) F-11	1
2	143-000-20	Tapping Screw (w/Plain Washer) M5x38 SUS304 (EN X5CrNi18-10) Stainless Steel	2
3	009-120-17	Terminal 1-SD CU	3
4	068-000-19	Handle Resin	1
5	143-146-18	Tapping Screw (w/Plain Washer) M5x20 SUS304 (EN X5CrNi18-10) Stainless Steel	2
6	140-000-34	Hex.Bolt (w/Spring/Plain Washer) M5x25(14L) SUS304 (EN X5CrNi18-10) Stainless Steel	4
7	122-003-17	O-Ring P-5 NBR	4
8	121-239-11	Packing FAMILY-10A(P.C.28) Silicon	1
9	106-000-11	Float Set TF-PM Resin	1
10	051-000-14	Motor Head Cover Resin	1
11	076-000-24	Capacitor 110V/230V-50HZ(EUR) 28MFD-220VAC	1
11	076-000-24	Capacitor 110V/230V-50HZ(EUR) 28MFD-220VAC	1
12	143-000-22	Tapping Screw M3x10 SWCH	1
13	143-086-22	Pan Screw (w/Spring Washer) M4x8 SWRM	2
14	127-000-23	Capacitor Fixing Plate SPCC	1
15	143-000-21	Pan Screw M4x15(30L) SS	4
16	121-001-06	Packing d110.5xd115.5x4.5t(PLS) NBR	1
17	140-452-11	Hex.Bolt (w/Spring/Plain Washer) M4x8 BSBM	1
18	009-000-46	Earth Terminal 1.25mm2x175L	1
19	050-000-34	Motor Bracket ADC	1
20	142-388-11	Wave Washer #6201(D=30.6) S65CM	2
21	052-100-15	Bearing 6201ZZC3	1
22	055-000-94	Rotor w/Bearing	1
23	052-100-15	Bearing 6201ZZC3	1
24	056-002-19	Stator 110V-50HZ(EUR) w/M. Frame	1
24	056-002-21	Stator 220/230/240V-50HZ w/M. Frame	1
25	060-000-65	Bearing Housing ADC	1
26	025-000-42	Mechanical Seal D-12B SiC	1
27	121-001-11	Packing 40PU2.15-52/62 NBR	1
28	121-246-11	Packing (Oil Plug) d10.3xd16x2t PE	1
29	035-127-15	Oil Plug M10x15 SUS304 (EN X5CrNi18-10) Stainless Steel	1
30	020-001-22	Pump Casing (Upper) OMA) 2 Resin	1
31	143-000-26	Truss Screw (w/O-Ring) M6x20(P-5,NBR) SUS304 (EN X5CrNi18-10) Stainless Steel	4
32	203-065-11	Valve d17 Glass	1
33	121-000-48	Packing OMA) 2 NBR	1
34	142-390-16	Conical Spring Washer d9.2xd18x0.7t SUS304 (EN X5CrNi18-10) Stainless Steel	1
35	021-004-71	Impeller (50HZ) OMA) 2 Resin	1
36	143-173-14	Truss Screw (w/Plain Washer) M5x10 SUS304 (EN X5CrNi18-10) Stainless Steel	1
37	020-001-23	Pump Casing (Lower) OMA) 2 Resin	1
38	143-000-15	Tapping Screw (w/Plain Washer) M5x30 SUS304 (EN X5CrNi18-10) Stainless Steel	3
39	023-000-42	Strainer Stand OMA) 2 Resin	1
40	143-000-18	Tapping Screw (w/Plain Washer) M5x50 SUS304 (EN X5CrNi18-10) Stainless Steel	6
	173-001-00	Packing & O-Ring Set	1
	##oilWhite	ml White Oil	165

Exploded View OMA2



OMA3

Kontroll-Nr. --

2020-02-03 V.18 / 1.10.2015

OMA3			
Item	Item no.	Description	Quant.
1	001-003-91	Cabtyre Cable Set (10m) 110V-50HZ(EUR) H07RN3Cx1mm2 TF-11	1
1	001-350-14	Cabtyre Cable Set (10m) 220/230/240V-50HZ(EUR) H07RN3Cx1mm2(CEE-W/PLUG) F-11	1
2	143-000-20	Tapping Screw (w/Plain Washer) M5x38 SUS304 (EN X5CrNi18-10) Stainless Steel	2
3	009-120-17	Terminal 1-SD CU	3
4	068-000-19	Handle Resin	1
5	143-146-18	Tapping Screw (w/Plain Washer) M5x20 SUS304 (EN X5CrNi18-10) Stainless Steel	2
6	140-000-34	Hex.Bolt (w/Spring/Plain Washer) M5x25(14L) SUS304 (EN X5CrNi18-10) Stainless Steel	4
7	122-003-17	O-Ring P-5 NBR	4
8	121-239-11	Packing FAMILY-10A(P.C.28) Silicon	1
9	106-000-11	Float Set TF-PM Resin	1
10	051-000-14	Motor Head Cover Resin	1
11	076-000-24	Capacitor 110V/230V-50HZ(EUR) 28MFD-220VAC	1
11	076-000-24	Capacitor 110V/230V-50HZ(EUR) 28MFD-220VAC	1
12	143-000-22	Tapping Screw M3x10 SWCH	1
13	143-086-22	Pan Screw (w/Spring Washer) M4x8 SWRM	2
14	127-000-23	Capacitor Fixing Plate SPCC	1
15	143-000-21	Pan Screw M4x15(30L) SS	4
16	121-001-06	Packing d110.5xd115.5x4.5t(PLS) NBR	1
17	140-452-11	Hex.Bolt (w/Spring/Plain Washer) M4x8 BSBM	1
18	009-000-46	Earth Terminal 1.25mm2x175L	1
19	050-000-34	Motor Bracket ADC	1
20	142-388-11	Wave Washer #6201(D=30.6) S65CM	2
21	052-100-15	Bearing 6201ZZC3	1
22	055-002-17	Rotor	1
23	052-100-15	Bearing 6201ZZC3	1
24	056-002-19	Stator 110V-50HZ(EUR) w/M. Frame	1
24	056-002-21	Stator 220/230/240V-50HZ w/M. Frame	1
25	060-001-18	Bearing Housing ADC	1
26	025-000-42	Mechanical Seal D-12B SiC	1
27	121-001-11	Packing 40PU2.15-52/62 NBR	1
28	121-246-11	Packing (Oil Plug) d10.3xd16x2t PE	1
29	035-127-15	Oil Plug M10x15 SUS304 (EN X5CrNi18-10) Stainless Steel	1
30	020-001-22	Pump Casing (Upper) OMA) 2 Resin	1
31	143-000-26	Truss Screw (w/O-Ring) M6x20(P-5,NBR) SUS304 (EN X5CrNi18-10) Stainless Steel	4
32	203-065-11	Valve d17 Glass	1
33	121-000-48	Packing OMA) 2 NBR	1
34	142-390-16	Conical Spring Washer d9.2xd18x0.7t SUS304 (EN X5CrNi18-10) Stainless Steel	1
35	021-004-71	Impeller (50HZ) OMA) 2 Resin	1
36	143-173-14	Truss Screw (w/Plain Washer) M5x10 SUS304 (EN X5CrNi18-10) Stainless Steel	1
37	020-001-23	Pump Casing (Lower) OMA) 2 Resin	1
38	143-000-15	Tapping Screw (w/Plain Washer) M5x30 SUS304 (EN X5CrNi18-10) Stainless Steel	3
39	023-000-42	Strainer Stand OMA) 2 Resin	1
40	143-000-18	Tapping Screw (w/Plain Washer) M5x50 SUS304 (EN X5CrNi18-10) Stainless Steel	6
	173-001-00	Packing & O-Ring Set	1
	##oilWhite	ml White Oil	165

Exploded View OMA3

