

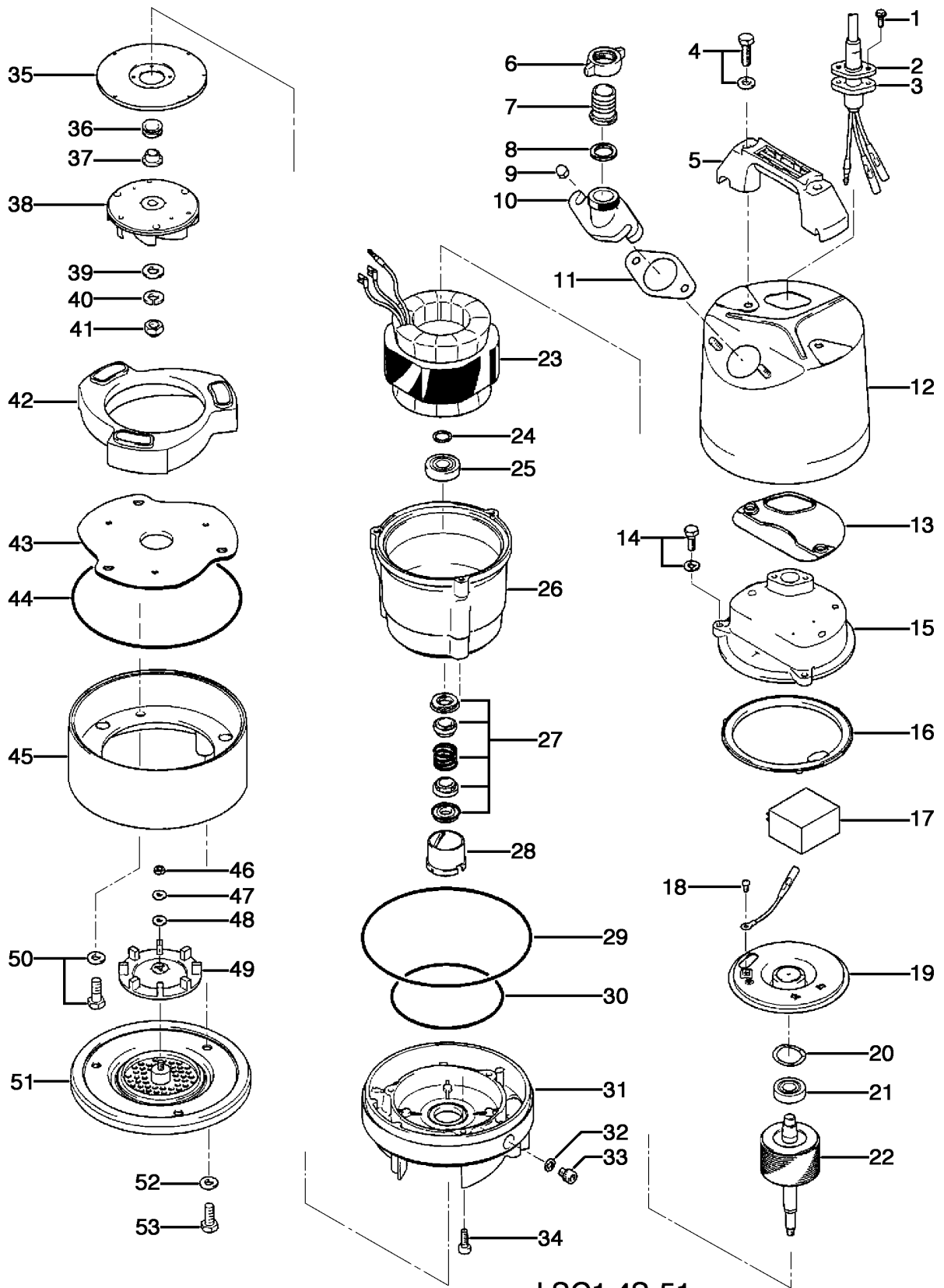
LSC1.4S-51

Kontroll-Nr. --

2020-02-03 V.18 / 1.10.2015

LSC1.4S-51			
Item	Item no.	Description	Quant.
1	140-427-17	Hex.Bolt (w/Plain Washer) M6x15 SUS304 (EN X5CrNi18-10)	2
2	003-190-10	Gland SUS316 (EN X5Cr-Ni-Mo17-12-2)	1
3	001-007-43	Cabtyre Cable Set (10m) 230V-50HZ(EUR) H07RN3Cx1mm2(CEE-W/PLUG) LB(HAR)	1
4	140-000-13	Hex.Bolt (w/Plain Washer) M6x65 SUS304 (EN X5CrNi18-10) Stainless Steel	2
5	068-289-18	Handle LBA3-250/480 (SPC+NBR)	1
6	128-000-01	Union PF-1 ADC	1
7	032-000-20	Hose Coupling LSC/LSP type, 25A ADC12	1
8	121-000-21	Packing LSC/LSP type, 25A NBR	1
9	141-144-10	Flanged Hex. Nut M8 SUS304 (EN X5CrNi18-10) Stainless Steel	2
10	032-000-19	Threaded flange 1" LSC1.4S-51/61 type ADC12	1
11	121-587-17	Packing LB-250/480-51/61 NBR	1
12	065-000-18	Outer Cover LSC type, Orange (2.5YR5/13) SPC	1
13	121-434-18	Packing LB3-250/480 Synthetic Rubber	1
14	140-431-14	Hex.Bolt (w/Plain Washer) M6x25 SUS304 (EN X5CrNi18-10) Stainless Steel	3
15	051-282-19	Head Cover ADC	1
16	121-546-14	Packing d120xd142x6.2t NBR	1
17	076-161-18	Capacitor 220/230/240V-50HZ SH-CAP.580VAC-8MF(3Terminal)	1
18	143-203-14	Pan Screw M4x5	1
19	050-451-18	Motor Bracket SECD	1
20	142-451-16	Wave Washer 6201(D=32,t=0.25) SUP	2
21	052-100-15	Bearing 6201ZZC3	1
22	055-889-14	Rotor (HS2.4S-51/52, LSC1.4S-51, LB-480-52)	1
23	056-C70-19	Stator 220/230/240V-50HZ	1
24	061-180-17	Bearing Collar d15.1xd20x1.6t SS	1
25	052-101-16	Bearing 6202ZZC3	1
26	064-508-14	Motor Frame ADC	1
27	025-000-45	Mechanical Seal W-14VCA SIC	1
28	030-000-09	Oil Lifter W-14VL Resin	1
29	122-453-16	O-Ring 172xd2.7 NBR	1
30	122-133-17	O-Ring G-110 NBR	1
31	029-000-70	Oil Casing LB-250/480-51/61 T type ADC	1
32	121-246-11	Packing (Oil Plug) d10.3xd16x2t PE	1
33	035-124-12	Oil Plug M10x15 SUS304 (EN X5CrNi18-10)	1
34	140-252-19	Hex.Socket Cap Bolt M6x20 SUS304 (EN X5CrNi18-10)	3
35	031-000-12	Wear Ring LSC1.4S-51/61 SPC+Urethane Rubber	1
36	122-441-11	V-Ring VR-14 NBR	1
37	071-292-14	Shaft Sleeve LB3-250/480 SUS304 (EN X5CrNi18-10) Stainless Steel	1
38	021-007-43	Impeller 50Hz	1
38	021-007-44	Impeller (60Hz) 60Hz Urethane Rubber	1
39	142-127-10	Plain Washer M8 SUS304 (EN X5CrNi18-10) Stainless Steel	1
40	142-210-11	Plain Washer d8.6xd13.4x1t SUS304 (EN X5CrNi18-10) Stainless Steel	1
41	141-030-12	Hex.Cap Nut M8 SUS304 (EN X5CrNi18-10) Stainless Steel	1
42	020-B89-19	Pump Casing LB-250/480-51/61 T type Synthetic Rubber	1
43	022-001-27	Suction Cover LB-750 SPC	1
44	122-453-16	O-Ring 172xd2.7 NBR	1
45	023-000-52	Stand LSC1.4S-51/61 type ADC	1
46	141-004-17	Hex.Nut 380/440/460V-60Hz M6 SUS304 (EN X5Cr18-10)	1
47	142-229-13	Plain Washer d6.5xd16x1t SUS304 (EN X5CrNi18-10) Stainless Steel	1
48	121-266-17	Packing d6xd16x1t NBR	1
49	203-015-16	Swing Check Valve LSC-4 SBR	1
50	140-477-12	Hex.Bolt (w/Plain Washer) M6x30 SUS304 (EN X5CrNi18-10)	3
51	049-000-09	Bottom Plate (SPC+NBR)	1
52	142-222-16	Seal Washer WF-8 SPC+NBR	3
53	140-054-19	Hex.Bolt M6x20 SUS304 (EN X5Cr18-10)	3
	173-000-40	Packing & O-Ring Set	1
	##oilVG32	ml Turbine Oil ISO VG32	155

Exploded View LSC1.4S-51



LSC1.4S-51

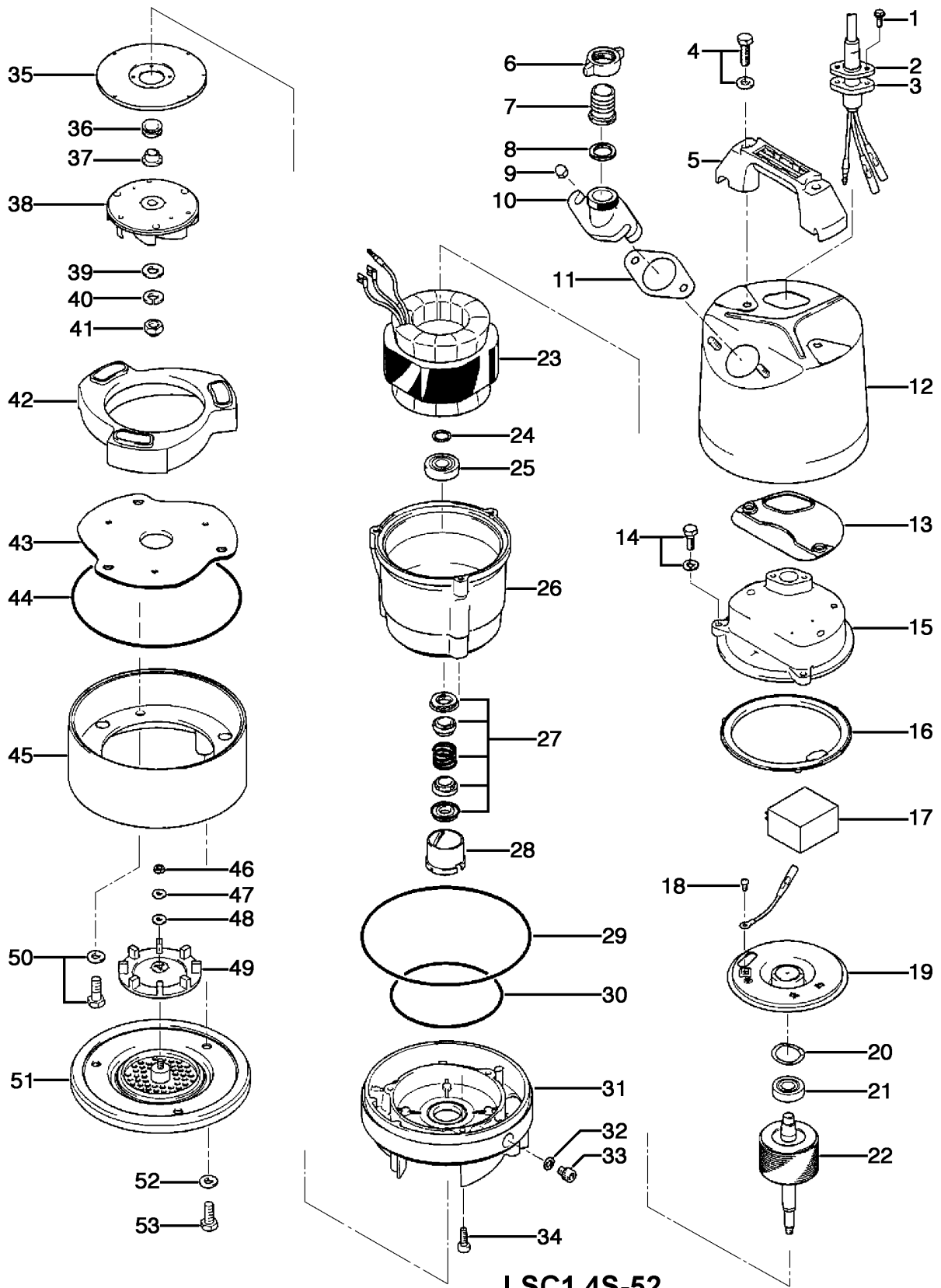
LSC1.4S-52

Kontroll-Nr. --

2020-02-03 V.18 / 1.10.2015

LSC1.4S-52			
Item	Item no.	Description	Quant.
1	140-427-17	Hex.Bolt (w/Plain Washer) M6x15 SUS304 (EN X5CrNi18-10)	2
2	003-190-10	Gland SUS316 (EN X5Cr-Ni-Mo17-12-2)	1
3	001-007-43	Cabletye Cable Set (10m) 230V-50HZ(EUR) H07RN3Cx1mm2(CEE-W/PLUG) LB(HAR)	1
4	140-000-13	Hex.Bolt (w/Plain Washer) M6x65 SUS304 (EN X5CrNi18-10) Stainless Steel	2
5	068-289-18	Handle LBA3-250/480 (SPC+NBR)	1
6	128-000-01	Union PF-1 ADC	1
7	032-000-20	Hose Coupling LSC/LSP type, 25A ADC12	1
8	121-000-21	Packing LSC/LSP type, 25A NBR	1
9	141-144-10	Flanged Hex. Nut M8 SUS304 (EN X5CrNi18-10) Stainless Steel	2
10	032-000-19	Threaded flange 1" LSC1.4S-51/61 type ADC12	1
11	121-587-17	Packing LB-250/480-51/61 NBR	1
12	065-000-18	Outer Cover LSC type, Orange (2.5YR5/13) SPC	1
13	121-434-18	Packing LB3-250/480 Synthetic Rubber	1
14	140-431-14	Hex.Bolt (w/Plain Washer) M6x25 SUS304 (EN X5CrNi18-10) Stainless Steel	3
15	051-282-19	Head Cover ADC	1
16	121-546-14	Packing d120xd142x6.2t NBR	1
17	076-161-18	Capacitor 220/230/240V-50HZ SH-CAP.580VAC-8MF(3Terminal)	1
18	143-203-14	Pan Screw M4x5	1
19	050-451-18	Motor Bracket SECD	1
20	142-451-16	Wave Washer 6201(D=32,t=0.25) SUP	2
21	052-100-15	Bearing 6201ZZC3	1
22	055-000-29	Rotor (HS2.4S-53, LSC1.4S-52, LB-480-53)	1
23	056-C70-19	Stator 220/230/240V-50HZ	1
24	061-180-17	Bearing Collar d15.1xd20x1.6t SS	1
25	052-101-16	Bearing 6202ZZC3	1
26	064-508-14	Motor Frame ADC	1
27	025-000-45	Mechanical Seal W-14VCA SIC	1
28	030-000-09	Oil Lifter W-14VL Resin	1
29	122-453-16	O-Ring 172xd2.7 NBR	1
30	122-133-17	O-Ring G-110 NBR	1
31	029-000-70	Oil Casing LB-250/480-51/61 T type ADC	1
32	121-246-11	Packing (Oil Plug) d10.3xd16x2t PE	1
33	035-124-12	Oil Plug M10x15 SUS304 (EN X5CrNi18-10)	1
34	140-252-19	Hex.Socket Cap Bolt M6x20 SUS304 (EN X5CrNi18-10)	3
35	031-000-12	Wear Ring LSC1.4S-51/61 SPC+Urethane Rubber	1
36	122-441-11	V-Ring VR-14 NBR	1
37	071-292-14	Shaft Sleeve LB3-250/480 SUS304 (EN X5CrNi18-10) Stainless Steel	1
38	021-007-43	Impeller 50Hz	1
38	021-007-44	Impeller (60HZ) 60Hz Urethane Rubber	1
39	142-127-10	Plain Washer M8 SUS304 (EN X5CrNi18-10) Stainless Steel	1
40	142-210-11	Plain Washer d8.6xd13.4x1t SUS304 (EN X5CrNi18-10) Stainless Steel	1
41	141-030-12	Hex.Cap Nut M8 SUS304 (EN X5CrNi18-10) Stainless Steel	1
42	020-B89-19	Pump Casing LB-250/480-51/61 T type Synthetic Rubber	1
43	022-001-27	Suction Cover LB-750 SPC	1
44	122-453-16	O-Ring 172xd2.7 NBR	1
45	023-000-52	Stand LSC1.4S-51/61 type ADC	1
46	141-004-17	Hex.Nut 380/440/460V-60Hz M6 SUS304 (EN X5Cr18-10)	1
47	142-229-13	Plain Washer d6.5xd16x1t SUS304 (EN X5CrNi18-10) Stainless Steel	1
48	121-266-17	Packing d6xd16x1t NBR	1
49	203-015-16	Swing Check Valve LSC-4 SBR	1
50	140-477-12	Hex.Bolt (w/Plain Washer) M6x30 SUS304 (EN X5CrNi18-10)	3
51	049-000-09	Bottom Plate (SPC+NBR)	1
52	142-222-16	Seal Washer WF-8 SPC+NBR	3
53	140-054-19	Hex.Bolt M6x20 SUS304 (EN X5Cr18-10)	3
	173-000-40	Packing & O-Ring Set	1
	##oilVG32	ml Turbine Oil ISO VG32	155

Exploded View LSC1.4S-52



LSC1.4S-52